

# Green Print for Windows

© Rod Johnson, 1996

## Help contents

[What it does](#)

[Printing from a disk file](#)

[Printing from the Windows clipboard](#)

[Printing multiple files](#)

[Print options](#)

[Advanced print options](#)

[About the main-window graphic](#)

[Saving options](#)

[Keyboard shortcuts](#)

[Information about GreenPrint development](#)

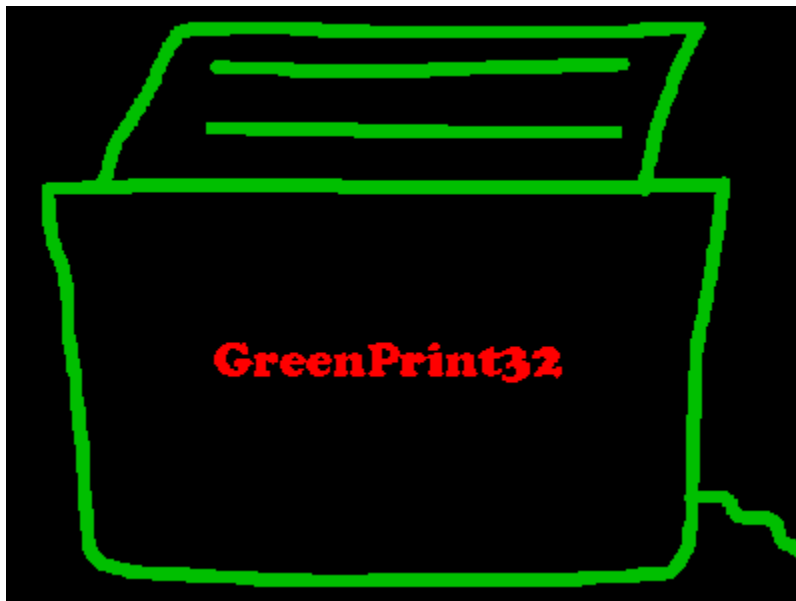
[Uninstalling GreenPrint, or installing a later version](#)

[Solutions to common problems](#)

[Shareware notice](#)

Note: Text that appears in red applies only to the Windows 95 version of GreenPrint.

Text that appears in blue applies only to the Windows 3.1 version of GreenPrint.





## Printing multiple files from disk

There are two ways to print multiple files from disk:

1. Go through the Print file from disk choice on the File menu, and Shift- or Control-click to select several files.
2. Drag the selected files onto the GreenPrint icon or into the GreenPrint main window. You can use Windows File Manager (Win 3.1/95) or **Explorer (Win 95)** to help you group the files you wish to print: for example, by date or by file type.  
Use **Explorer** or **File Manager** from the **File** menu to run one of these programs if one is not already running.

**TIP** Press **Ctrl+W** to move the GreenPrint main window to the top left-hand corner of the screen, and free as much space as possible for Explorer or File Manager. See the list of keyboard shortcuts for other GreenPrint functions you can access from the keyboard.

By default, GreenPrint will format the selected files so that each file begins on a new virtual page. The Advanced Print Settings dialog box allows you to choose to begin each file on a new physical page.

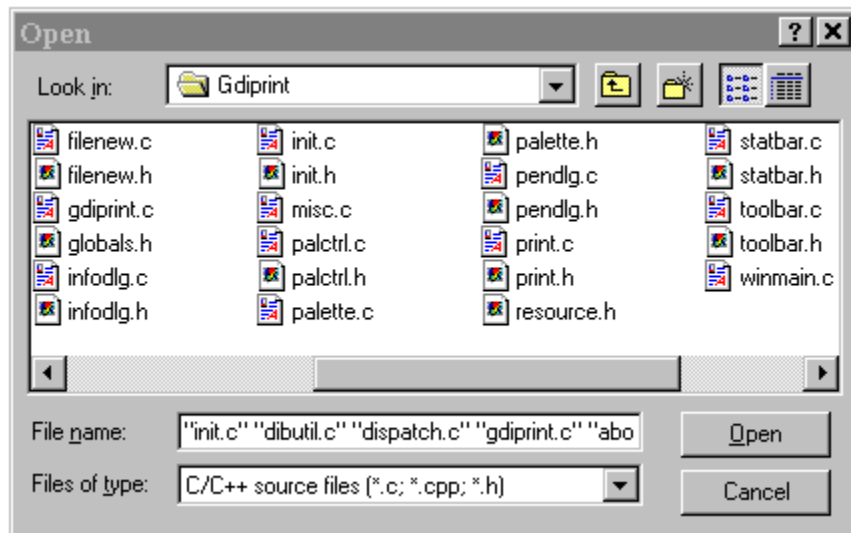
GreenPrint32 version 1.2 supports Windows 32 multithreading. This means that as soon as a print job begins, control returns to the main window, allowing you to initiate other print jobs. Each print job generates a status window containing a progress indicator. Queued print jobs will always print in the order in which they were initiated, and will not interrupt jobs that are currently printing.



## Printing from a disk file

To print from a file on disk, you can go through the **File-Print from disk** menu option or drag files onto the GreenPrint icon or into the program's window once it is running.

The file open dialog looks like this:



It works like any other Windows 95 Explorer-style file open dialog. You can Shift- or Control-click to select several files. Once you have made your choice by double-clicking on a filename or clicking the Open button, the next stage of the printing process is the Preprint dialog box. You can use the predefined filters to help you select files.

**Note:** The illustration shows GreenPrint running under Windows 95. The 16-bit version of GreenPrint uses the Windows 3.1 file common dialogs, which also support Shift- and Control-clicking, but *not* the use of Ctrl-A to select all files.



## Printing from the Windows clipboard

GreenPrint can print text in the Windows clipboard that originates from any Windows application. To access this feature, choose **Print from clipboard** from the File menu. If the clipboard is empty or does not contain text, GreenPrint will indicate this, and will not print. If there is valid text in the clipboard, this option will bring up the same print settings dialog box as you see on printing a file from disk, and you continue exactly as if you were printing a disk file. You can edit the text (use the **Edit next** button in the print settings dialog box) and save changes before printing.





# Uninstalling GreenPrint, or installing a later version

To uninstall GreenPrint32 under Windows 95, follow these steps:

Enter **Control Panel**, and double-click **Add/Remove Programs**

You should see GreenPrint32 listed. Double-click on its entry and all its files will automatically be removed from your system.

To install a later version of GreenPrint32 over your existing files, you can do one of the following:

(1) rerun the setup program provided with the newer version of GreenPrint32

(2) copy the newer `gprint32.exe` and `gprint32.hlp` files over your existing files yourself. The default path for the GreenPrint32 files is

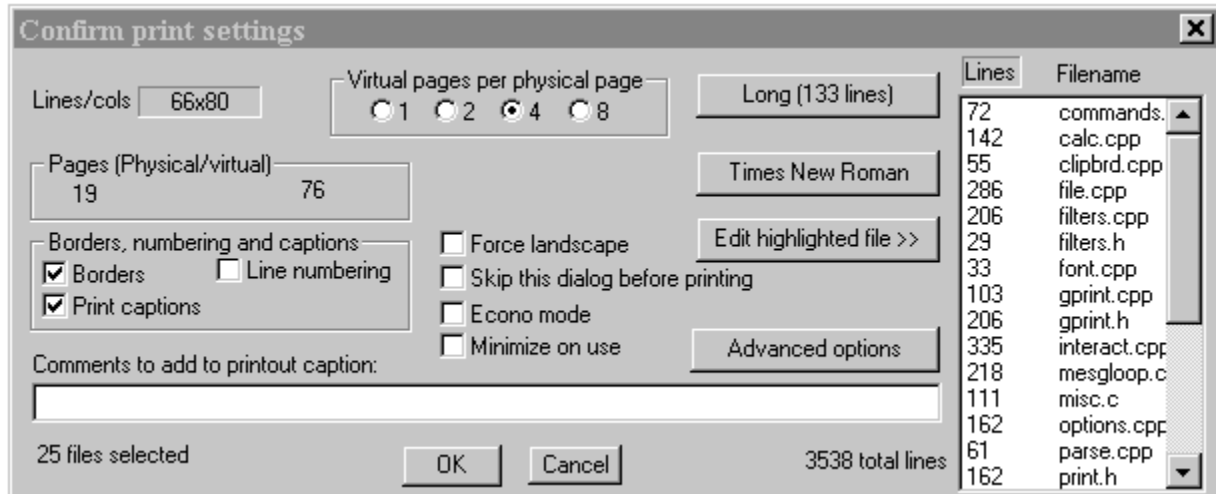
`c:\Program Files\GreenPrint32\`

Note that the 16-bit GreenPrint files are named `gprint16.exe` and `gprint16.hlp`.



# Printing options

Basic printing options are set through the Print Settings dialog box.



In addition to the options on this screen, you can press the Advanced print options buttons to set options such as margins, lines and columns per virtual page and expansion of tabs.

**To choose a different typeface (or font) for your output,** select **Choose typeface** from the **Options** menu, press **F9** from the main screen, or press the button displaying the current typeface in the Print Settings dialog box. You can save your typeface preferences to make them the default: for example, if you prefer the traditional `Courier New`.

You can press the **Edit** button to view or edit your selected files with Windows notepad **or, with GreenPrint32, the program associated with files with the given extension.**

When you have finished setting print options, press **OK** to proceed to select a printer and print the selected file(s).

Choose **Minimize on use** to have the GreenPrint main window automatically minimize when a print run is complete.

Pressing **Cancel** at this point or closing the dialog box will cancel printing. The dialog box will disappear and GreenPrint will discard any changes to print options that you may have made.

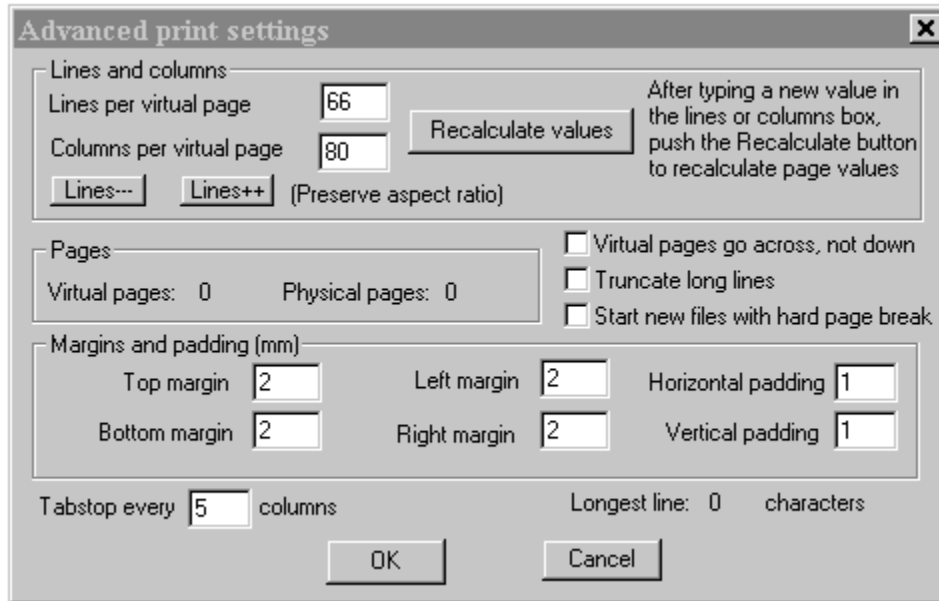
If you have hit **OK** and still want to cancel printing, you can abort the print process during spooling. *However, your printer may continue to print for*

*some time until it exhausts its buffer.*

It is possible to edit the filters that GreenPrint uses to display files when printing from disk. To do this, choose **Modify file open filters** from the **Options** menu. The filter that appears at the top of the listbox will be the default filter. Choose **Save current options** from the **Options** menu to save this options to disk for future sessions. *Note that it is impossible to save changes to filters to disk with an unregistered copy of GreenPrint.*

# Advanced print options

Advanced printing options include the number of lines and columns per virtual page, the number of spaces per tab stop, and margins and padding. (**Padding** refers to the gap between a page border and page text.)



Using the **Recalculate**, **Lines++** and **Lines--** buttons, you can alter the formatting options and immediately see the effect this will have on the number of physical and virtual pages.

For example, if you noticed that your selected file was going to amount to 13.1 physical pages, hitting the **Lines++** button a few times might ensure that it printed on 13, rather than 14, pages.

**TIP** Note that when you use GreenPrint to print several files, each file begins on a new virtual page. This means that a small change in the number of lines per page can sometimes cause a significant change in the number of virtual and/or physical pages. There is also an option in the Advanced Print Settings dialog box to begin new files with a hard (physical) page break.



## Saving and loading preferences

Each time you run GreenPrint, it loads the preferences saved in the registry or the `win.ini` file (depending on whether it's the 32 or 16-bit version). Initially, it uses the default preferences. However, each time you change a print setting, such as the number of virtual pages per physical page or margin settings, GreenPrint remembers that change for the remainder of your session or until you alter the relevant settings again. If you want your new settings to become the settings that are automatically loaded when GreenPrint starts, choose **Save current options** from the Options menu, or type **Ctrl+S**.

If while running GreenPrint you have altered print settings unintentionally, you can choose *Return to saved options* from the Options menu to return to the most recently saved options.

You can return to the original default settings at any time by **Return to default settings** from the options menu. If you then choose **Save current options**, the default settings will again be loaded automatically when GreenPrint starts.





# Keyboard shortcuts

**F1** Help contents

**F7** Exit

**F9** Select typeface

**Ctrl+B** Toggle border printing

**Ctrl+E** Run Windows 95 Explorer (to allow file dragging into GreenPrint).

**Ctrl+F** Run legacy File Manager. Note that you can't drag and drop from File Manager onto the icon of a Windows32 program such as GreenPrint32. However, File Manager is still arguably more powerful than Explorer.

**Ctrl+L** Toggle landscape printing

**Ctrl+N** Toggle line numbering

**Ctrl+O** Print file from disk

**Ctrl+P** " " "

**Ctrl+Alt+P** Bring up print settings dialog box

**Ctrl+S** Save current print options to disk

**Ctrl+V** Print from Windows clipboard

**Ctrl+W** Toggle the GreenPrint main window to/from the top left corner of the screen. (Useful in printing from the clipboard, or printing with drag and drop from a program such as Windows 95 Explorer).

**Ctrl+1** 1 up

**Ctrl+2** 2 up

**Ctrl+4** 4 up

**Ctrl+8** 8 up

# Mouse shortcuts

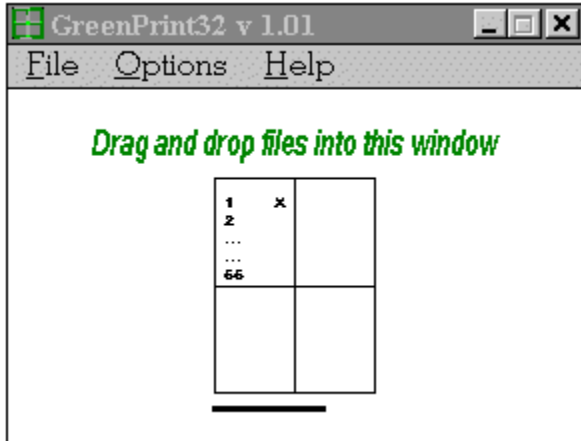
## **Double-clicking in the main window**

Print from disk

## **Right-clicking in the main window**

Print options

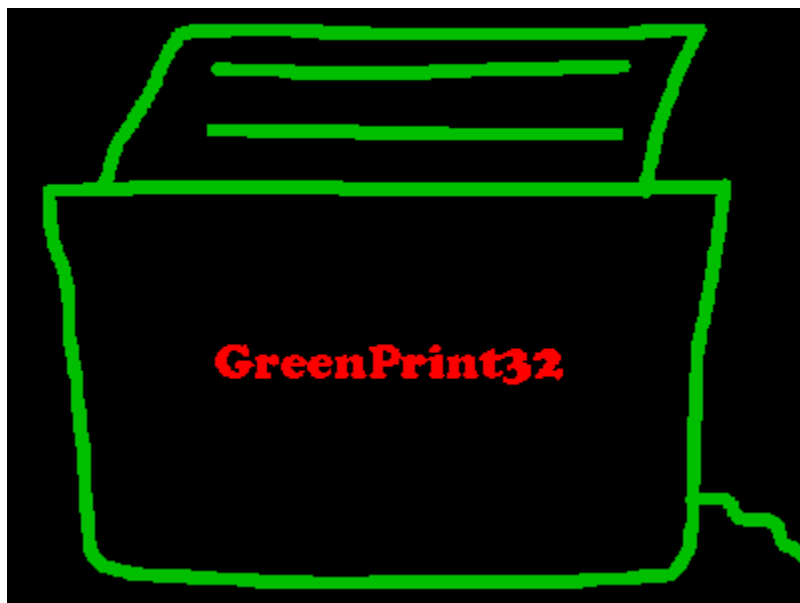
## About the main-window graphic



The grid in the main-window graphic indicates the current number of virtual pages per physical page. If the lines are dashed, GreenPrint is not configured to print borders. A solid line below the grid indicates that caption printing is enabled. The orientation of the graphic (portrait or landscape) indicates the current default orientation. Small numbers in the top left virtual page indicate that line numbering is switched on, and, if so, the number of lines per virtual page. An X in the right-hand corner of the top left virtual page indicates that GreenPrint is configured to truncate long lines.

To change these options, use the Print Options dialog box.

## Information about GreenPrint development



**GreenPrint for Windows** was written for the Windows 16 and 32 APIs by Rod Johnson.

*[rjohnson@extro.ucc.su.oz.au](mailto:rjohnson@extro.ucc.su.oz.au)*

*<http://www.usyd.edu.au/~rjohnson/frontpage.html>*

© June 1996-January 1997.

Versions up to 1.01 were written in ANSI C. Version 1.1 marked a shift to C++, and an object-oriented design.

Thanks to Bob West, and those registered users who have made helpful suggestions.

### **Compiles**

Both the Windows 95/NT version (`gprint32`) and the Windows 3.1 version (`gprint16`) were compiled with Watcom C/C++ v. 10.6 on a Pentium running Windows 95.

The 16-bit version will continue to be supported in the foreseeable future, although it may not include all the features available in the 32-bit version, which has always been the definitive version of the product.

### **Versions**

I began writing GreenPrint for my own use in June, 1996, out of frustration with the lengthy printouts of source code and documentation that Windows programming demands. Since then I have worked to add features and make

it of wider use.

The present version of GreenPrint is 1.1 (December 1996).

GreenPrint is not freeware, but shareware. The registration fee is \$15. (Follow this link for details on how to register). The benefits of registration include

- no more nag screens
- free updates as GreenPrint evolves
- the right to have your suggestions and bug reports taken seriously
- the satisfaction of supporting the shareware concept

### **Future developments**

Future developments planned for GreenPrint include

- syntax highlighting in a variety of languages including C/C++, Java and Perl
- user-defined indexing, allowing a user to define a list of words or symbols in a file to be printed and have GreenPrint automatically generate and print an index -- an especially useful feature when printing long files of documentation.
- booklet printing

**Suggestions from registered users are welcome.**

For the latest information and the most recent version of the program, please visit the GreenPrint homepage at

**<http://www-personal.usyd.edu/au/~rjohnson/winapps/winapps.shtml>**



## What this program is for

**GreenPrint** is a shareware utility designed to print source code and text files, saving paper and time by enabling printing multiple virtual pages to each physical page and allowing control over the number of lines and columns per page, margins and other formatting variables.

Its functionality is similar to that of **mpage**, with the important advantages of a more approachable Windows interface, and full functionality on **any** printer supported by Windows, rather than merely expensive PostScript lasers.

It is intended primarily for programmers, trouble-shooters and users intending to print out extensive documentation for shareware products.

The Print from clipboard function offers a fast way to print text from most Windows applications. Sources might include help files for other programs (including reference material such as that provided with the Windows SDK), and even documents in word processors.

**GreenPrint** offers a high degree of control over margins, numbers of lines and columns per virtual page and other aspects of the appearance of the printed text. Although originally intended to save paper by printing long files of source code at reduced font size, other uses could include *enlarging* output for users with poor eyesight.

Both Windows 95 and Windows 3.1 versions can be run from a server on a Windows network. Preferences will be saved on each client machine.

**Note:** Text in this help file that appears in red refers only to the Windows 95 version of GreenPrint (GreenPrint32).

# Common Problems

## Problems with particular printers

GreenPrint's default options cause it to print very close to the edges of the page. This is normally appropriate, but may cause printing past the edge of the paper on some printers.

### Solutions:

1. Check that the paper is correctly aligned in the printer's input bin.
2. If necessary, change the print options from within GreenPrint to make the margins narrower (go into the Advanced Print Options dialog box). Save the new options to make them your default, so you won't run into the same problem again.

## GreenPrint prints garbage

### Solutions:

1. Are you sure that the file you're trying to print is a text file? If you try to print a file in another format, such as a bitmap (.bmp) or other graphic (e.g. .gif) or a binary file such as an .exe or .dll, GreenPrint will do its best, but you won't learn much from its output. As a rule, if you can't edit the file with a text editor like Textpad or Notepad, you can't use GreenPrint to print it. Open your file with a text editor and check.  
Note that some file formats fall between the two extremes of binary files and plain text files. HTML files and RTF files are good examples. They contain embedded codes, which means that what GreenPrint prints may not be what you expect, but *will* be an accurate representation of the file. Of course, if you're working with raw HTML or RTF, this may be just what you want.
2. O.K., it *is* a text file. Is your printer correctly connected? Check the connections and try resetting the printer. If GreenPrint still doesn't work, try printing from Notepad and see if it does any better.
3. If you've been through step 2 and GreenPrint still doesn't work, you may have found a bug... If so, please let me know. See below.

## GreenPrint can't find its help file

This problem results from an incomplete installation of GreenPrint.

### Solutions:

#### **GreenPrint32**

1. If possible, rerun the GreenPrint installer.



2. If you can't do this, adding the correct registry entries manually is a tricky business, so it's easiest to add the directory where the GreenPrint files are located to the path by modifying your `autoexec.bat` file and rebooting. (Note that this isn't the method of choice for storing system information about `.exe` and help file locations under Windows 95.)

### **GreenPrint16**

Add the directory where GreenPrint files are located to the path by modifying your `autoexec.bat` file and reboot.

### **If all else fails...**

Bug reports are welcome from registered users. If you have come across another problem with GreenPrint, please let me know. I'll be grateful and I'll try to fix it as soon as I can.

E-mail me at: **`rjohnson@extro.ucc.su.oz.au`**

If possible, send any files GreenPrint had trouble with as an attachment.

Rod Johnson, October 25, 1996

# GreenPrint Order Form

1.2

Post to:

Rod Johnson  
P.O. Box 41  
Londonderry NSW 2753  
AUSTRALIA

Name \_\_\_\_\_

E-mail \_\_\_\_\_

Street \_\_\_\_\_

Town/City \_\_\_\_\_

Postcode/Zip \_\_\_\_\_

Country \_\_\_\_\_

Circle the product you wish to receive:

**GreenPrint32** (Windows 95/NT)    **GreenPrint16** (Windows 3.1) **Both** (no  
extra charge)

How did you find out about GreenPrint?

\_\_\_\_\_

\_\_\_\_\_

Comments/Suggestions about GreenPrint

\_\_\_\_\_

\_\_\_\_\_

\_\_\_\_\_

## Payment

Cheque, money order or cash preferred.

Circle appropriate amount.    To receive update via e-mail                      To receive floppy disk

**U.S.**                                      \$15

\$20

**U.K.**                                      £10

£12

**Canada**                                \$C20

\$C25

**Australia**                              \$A15

\$A20

### Other countries

Money order in \$A                      \$A15

\$A20

Cheque in home currency

\$U.S.18\*

\$U.S.22\*

File server registration (> 3 clients):                      \$U.S.15 + \$U.S.8 x number of client machines

\*Convert to your currency at the prevailing exchange rate at the time of your order.

# GreenPrint shareware notice

**GreenPrint** © Rod Johnson, 1996.  
All rights reserved.

**Thank you for using GreenPrint!** You are welcome to evaluate GreenPrint for 30 days after installing it on your computer. After that period, if you wish to continue using it, you must register, by filling in the [order form](#). Failure to do so is a violation of copyright and the principles of shareware.

Registered users are entitled to free updates for the life of the product, and will benefit from any new functionality which may not be included in evaluation copies of the software.

You may distribute evaluation (but not registered) copies of the software, but must not charge for them (except for any media).

## Disclaimer

THIS SOFTWARE AND THE ACCOMPANYING FILES ARE SOLD "AS IS" AND WITHOUT WARRANTIES AS TO PERFORMANCE OR MERCHANTABILITY OR ANY OTHER WARRANTIES WHETHER EXPRESSED OR IMPLIED. SPECIFICALLY, NO WARRANTY OF FITNESS FOR A PARTICULAR PURPOSE IS OFFERED. THE AUTHOR WILL NOT BE LIABLE FOR ANY DAMAGES SUFFERED BY A LICENSEE AS A RESULT OF USING, MODIFYING OR DISTRIBUTING THIS SOFTWARE.

**Remember:** Supporting the shareware concept benefits users as well as programmers!

